



**UNIVERSITY OF DAR ES SALAAM
COLLEGE OF SOCIAL SCIENCES
DEPARTMENT OF GEOGRAPHY**

RESEARCH CHAIR ON FORCED DISPLACEMENT



**December
2025
Volume 6
Issue 1**



1

Table of Contents

1	Chair's Message
2	Coordinators' Corners
4	Research
13	Seminars
14	Training and Capacity Building
15	Research Support
16	Network and Links
17	Conferences

CHAIR'S MESSAGE

Prof. Opportuna Kweka

**Chair
Research Chair on Forced
Displacement**

This year we embarked on the regional research doing fieldwork in Uganda and Kenya while completing the writing and finalising plans for a special Issues and two books. So far the research has covered refugees in the urban and rural Tanzania, Kenya and Uganda; climate induced displacement in Tanzania and Kenya and development induced displacement in Tanzania with the trafficking theme being addressed through seminars and workshops only.

The Chair has continued to support postdoctoral researchers. So far three have been supported, from Tanzania, Kenya and Uganda, one is female, two of them have successfully completed with three papers or manuscripts each. As far as PhD research support is concerned, also 3 students have been supported from Burundi, Rwanda and Tanzania. In as far as the support for masters students is concerned, two female students have been supported. They are from Tanzania and Uganda.



The Chair is also part of the Network of 12 IDRC funded chairs, network of researchers working on issues of Forced Displacement in the Horn and East Africa; migration hub for the horn and East Africa; and has been providing advisory role and key note speeches to several other projects in the region.

The Chair continued to influence policy through policy dialogues and input to NGOs' advocacy. So far three national policy dialogues have been successfully conducted. Plans are on the way now to conduct a regional policy dialogue.

Message from Research Coordinator



Benezet Rwelengera
University of Dar es Salaam

At the East African Research Chair on Forced Displacement (EARCFD), research is driven by a commitment and dedication to advancing critical knowledge and fostering meaningful dialogue essential for shaping effective policies on forced displacement. Forced displacement concerns are evident across the wider East African community with varying manifestations and severity. Our research therefore integrates diverse perspectives and expertise, with a bias on decolonial and feminist theories. Through collaboration, we seek to contribute to more inclusive and effective policy responses.

Over the past six months, the EARCFD has played a pivotal role in advancing research on the critical link between climate change and displacement in drought-prone nomadic regions of Kenya and Tanzania. We also organised online writing workshops in August and September to strengthen our capacity and ensure that research papers are grounded in solid analytical and theoretical frameworks. Following these workshops, we conducted thorough in-house editing and quality checks on nearly a dozen manuscripts, which we are confident will make strong contributions to the academic literature upon submission. We are

highly encouraged by the progress achieved during this period and eagerly anticipate the successful completion and publication of these important works.

We sincerely thank researchers, interns, respondents, and all partners who have contributed to the EARCFD research efforts. Your dedication and active engagement are vital to advancing our mission, and we greatly value the chance to support such a diverse and expanding research portfolio. We remain committed to collaborating closely with regional researchers to achieve our broader project objectives, all while upholding institutional policies, IDRC mandates, and ethical standards.

In the coming months, we will prioritise support for postdoctoral, PhD, and master's students researching forced displacement. We will also study urban refugees in Kenya who have recently moved from camps. Broadly, we will seek to unpack the social and gendered aspects of forced displacement. Furthermore, we will strive to meet our goals and work towards publishing a range of materials, including peer-reviewed articles, book chapters, and policy dialogues. We will also remain committed not only to the dissemination of our findings but also to incorporating feedback received in due course.

Message from the Seminar and Training Coordinator



Edith Benedict
University of Dar es Salaam

The period from June to December 2025 was marked by vibrant intellectual engagement and capacity building. Through a monthly seminar series, training and internship programme, the East African Research Chair on Forced Displacement (EARCFD), via the office of Seminars and Training Coordination, fostered dynamic spaces for learning, collaboration, and professional development.

Seminars during this period explored critical issues, including human trafficking, legal frameworks and grounded realities of forced displacement. In addition to these seminars, the EARCFD participated in a webinar “UNHCR at 75: Challenges and Opportunities” hosted by LERRN in partnership with the Global Academic Interdisciplinary Network (GAIN). Together, these engagements enabled researchers to critically reflect on forced displacement dynamics by strengthening their knowledge base and facilitating the exchange of practical skills.

Ongoing engagement with postgraduate students, including support for postdoctoral researchers, and the enrolment of new PhD students from Rwanda and Uganda underscored the EARCFD’s commitment to strengthening the research capacity on and among forcibly displaced persons. In addition, through its call for the 2025 intern intake, targeting Rwandans and Burundians, the EARCFD looks forward to fostering inclusive capacity building and meaningful research engagement among forcibly displaced communities. We look forward to a year of continued engagement, collaboration and productivity.

Message from the Co-ordinator of the EARCFD, Uganda Cluster



Joseph Mukasa
Makerere University

Uganda’s cluster comprises five major thematic studies: refugees in rural and urban areas of Adjumani and Kampala, respectively; climate-induced mudslides in Kasese; drought and conflict in Karamoja; and oil pipeline-induced displacement in Hoima and Kikuube districts. The proposal to conduct these studies was approved by the Makerere University Social Science Research Ethics Committee (MAKSSREC). Subsequent to this approval, district clearances were sought from the eight districts of Kasese, Kikuube, Hoima, Kiryandongo, Adjumani, Karenga, Kotido, and Kampala, in addition to the Office of the Prime Minister. An application was made to the Uganda National Council for Science and Technology (UNCST), and approval for the study was granted on 4 November 2025.

Following UNCST approval, albeit after a rigorous and tedious process, the lead researcher for the refugee theme started data collection in December 2025 and has since completed the exercise. The remaining four research leads for the other thematic areas have yet to commence data collection. It is anticipated that they will conduct their data collection after the general elections, commencing on 15 January 2026. Delays in conducting data collection arose primarily from the bureaucratic processes involved in applying for clearance at the national level, owing to the numerous districts involved, which are located in different parts of Uganda.

In addition to the research lead on refugees who has completed data collection, the post-doctoral candidate working on education and refugees in Adjumani and Kiryandongo also commenced data collection in December and is expected to complete the process by January 2026. Lastly, there was commendable representation from the Uganda cluster team members in attending online seminar meetings in 2025, which is a testament to their commitment to the university’s work and solidarity with their regional colleagues.

3

Research



In the period between July and December, 2025, we had a number of ongoing research projects in Uganda, Kenya and Tanzania. The publication of the Compendium and Policy book is forthcoming. In this section, we shed light on some of the lessons and interesting reflections from those involved. It is worth noting that this is a collection from seasoned researchers, early career scholars and interns.

Reflections from Fieldworks

3.1. Climate Change and Displacement Nexus

3.1.1. Geography work package

- Dust, Bare Land, and the Strength of the Community
-Hawa Adinani
- Understanding Society-Centred Resilience to Climate Change and Displacement: Insights from Kajiado & Samburu, Kenya
-Otwori Dennis
- Triple co-existence? Livestock, wildlife and community in times of water scarcity-*Opportuna Kweka*

3.1.2. Social and Gender work package

- A Remarkable Bond in Kimotorok Village: Where the Maasai and Wildlife Meet in Moments of New Life *-Nassoro Kitunda*
- Forced Migration and Climate Change: Social and gendered adaptations in Kajiado and Samburu-*Njoki Wamai*

3.1.3. Politics work package

- From Retributive to Restorative Justice: Indigenous conflict resolution mechanisms of a Maasai community, Simanjiro District-*Issa Omary*

3.2 Refugees in Rural and Urban Uganda and Kenya

- Child protection, education and durable solutions
-Dominic Wani and Katerina Paul
- Personal experience and reflections on the fieldwork
-Salum Dominick
- Paradox of Progress: Field study exposes deepening crisis for Refugees in Uganda
-Robert Senath Esuruku and Joseph Mukasa

Geography work package

Dust, Bare Land, and the Strength of the Community

Hawa Adinani, University of Dar es Salaam

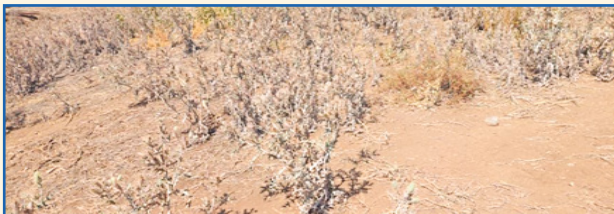
The dry wind, the dust rising from the bare land, the scattered thorny shrubs, and grazing herds welcomed me as I made my way toward Sinya village in Longido. Giraffes quietly crossing the landscape reminded me of how comforting nature can be, and how refreshing it felt to escape the intensity of city life, even just for a moment.

This was my first time working closely with pastoral communities, especially the Maasai. I had heard stories, read, and attended discussions, but being on the ground introduced a whole new level of understanding. The reality of their lived experience was richer and far more



complex than what I had imagined. But that, perhaps, is a story for another day.

Moving toward Sinya, I was struck by the vast stretches of bare land and dry, cracked soil, evidence of waterlogging in the past, followed by long periods of drought. Among the untouched thorny grasses (indicating they are unsuitable for grazing), I kept meeting large groups of cattle. It made me pause and reflect: *'How can this community achieve sustainable grazing under prolonged drought? What does climate resilience look like when the land itself is struggling?'*



Untouched thorny invasive grasses that are not suitable for grazing

Understanding Society-Centred Resilience to Climate Change and Displacement: Insights from Kajiado & Samburu, Kenya

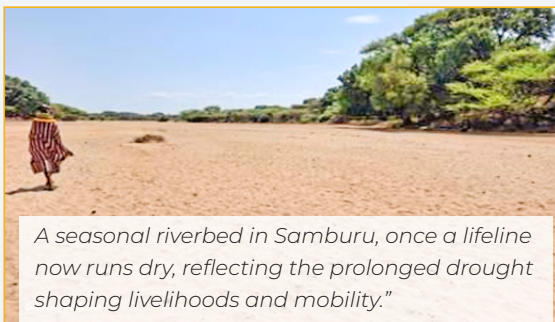
Otwori Dennis, Masinde Muliro University of Science and Technology

The first thing you notice when you arrive in Kajiado or Samburu, is the silence of the land. In both areas, the usual markers of life, green pasture, flowing seasonal streams, the soft hum of insects around water have thinned into absence. Riverbeds that once guided livestock and people are now pale corridors of sand and stone. Grass is scarce. Wind moves dust more easily than it moves seed. This is the geography of prolonged drought: not a single dramatic event, but a slow, persistent tightening around everyday life.

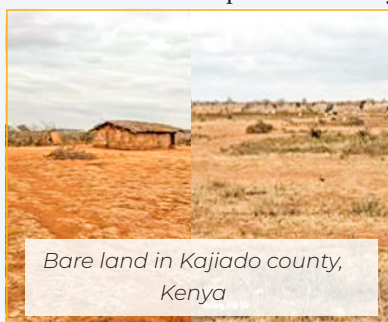
Our fieldwork in Kajiado and Samburu set out to understand society-centred resilience, the ways communities organize, adapt, and support one another

under climate stress, and how those coping systems shape mobility, displacement, and decisions to stay. While climate change is often discussed through rainfall charts and temperature records, resilience is lived in conversations at water points, in household choices about meals and school attendance, and in the quiet negotiations that determine who gets help first when resources run out.

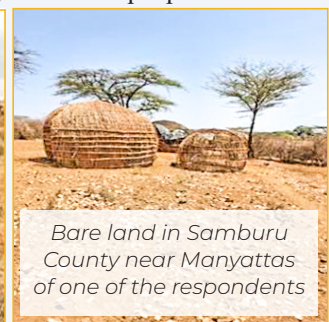
In the areas we visited, the drought was not abstract. It was visible: dry riverbeds, bare ground, shrinking pasture, and long stretches without surface water. Some households described the drought as a series of “seasons that never turned,” where short rains that once offered a reset now arrive late, fall unevenly, or disappear entirely. In essence, the landscape told the story before the people did.



A seasonal riverbed in Samburu, once a lifeline now runs dry, reflecting the prolonged drought shaping livelihoods and mobility.”



Bare land in Kajiado county, Kenya



Bare land in Samburu County near Manyattas of one of the respondents

Triple co-existence? Livestock, wildlife and community in times of water scarcity

Opportuna Kweka, University of Dar es Salaam



In Longido, climate change has made water increasingly uncertain. Rains arrive late, fall unevenly, or disappear altogether. To cope, the community began storing water in large plastic tanks near their houses—a simple solution for a growing problem.

But the tanks did not last. At night, thirsty wildlife—especially elephants—found the stored water. Drawn by smell and memory, they pushed against the plastic tanks, cracking them open. By morning, the water meant to sustain families and livestock had spilled into the dry earth.

Rather than blaming the animals, the community chose to adapt. They replaced fragile plastic with strength and ingenuity. A brick-lined well was built low to the ground, rising only slightly above the surface. Blending into the landscape, it looked like part of the field itself—unexpected, protected, and resilient.

When the wildlife returned, the water remained. This simple innovation did more than protect water; it reflected a deeper understanding of coexistence in a changing climate. In Longido, adaptation is not about fencing nature out, but learning how to live with it—one well, quietly holding hope beneath the earth.

However, we need to find a long term solution for all the wildlife and the community that is tree planting for production of water “crop”.



Social and Gender work package

A Remarkable Bond in Kimotorok Village: Where the Maasai and Wildlife Meet in Moments of New Life

Nassoro Kitunda, University of Dar es Salaam

During our recent field visit to Kimotorok Village, a Maasai community located near Tarangire National Park in Manyara, Tanzania, we witnessed an extraordinary example of coexistence between people and wildlife. In this community, a quiet and powerful story of trust unfolds each year, one that reflects a deep, traditional relationship with nature.

The Maasai of Kimotorok live close to vast wildlife habitats, yet their presence does not scare animals away. Instead, something unique happens. Wild animals such as zebras, wildebeest, and antelopes often approach the Maasai bomas during the birthing season. Witnessing this, illuminated the fact that Kimotorok is truly a safe haven for new life.

Community members explained that expectant mother animals come close to their homesteads, specifically when they are about to give birth. The bomas offer a sense of safety from predators, and the animals seem to know that the Maasai will not harm them.

Families shared stories of female animals calmly walking into areas near the homesteads, finding quiet corners, and giving birth just meters from the people's living spaces.

The Maasai watch respectfully; they do not interfere. Their culture teaches them to protect life and maintain balance with the natural world. This new birth at the edge of the boma epitomises the Maasai's respectful attitude that has continued for generations and appears to be recognised by the wildlife itself. To the animals, Kimotorok bomas are safe grounds, a peaceful space where new life can begin.



Once the newborns are strong enough, the mother animals lead them back toward the open plains of Tarangire National Park and the wider surrounding ecosystem, marking the return to the wild. This cycle, seeking refuge near the village during birth and returning to the reserves afterwards, has been part of the community's natural rhythm for many years.

What we saw in Kimotorok Village is more than a story; it is a lesson in living in harmony with nature. It presents a model of coexistence that does not always feature in the mainstream. The Maasai lifestyle, built on respect for wildlife and the environment, shows how communities can contribute to conservation simply through their traditions and values. This remarkable relationship between the Maasai and the animals around Tarangire National Park stands as an inspiring example of peaceful coexistence, one worth sharing far beyond Manyara.

Below are the areas in Kimotorok Village near the Bomas where animals give birth. Pictures of these areas are shown below



Forced Migration and Climate Change: Social and gendered adaptations in Kajiado and Samburu

Njoki Wamai, United States International University (USIU) in Kenya - Africa

Between August and September 2025, field research was conducted in two arid regions of Kenya which include in Kajiado South and Nachorwa and Baragoi in Samburu North. The study, supported by the International Development Research Centre (IDRC) and hosted by the University of Dar es Salaam, engaged approximately 30 community members in interviews and focus group discussions in each location to examine how climate change induced displacement is reshaping social relations, gender roles, and community resilience strategies

Both Kajiado and Samburu are pastoralist landscapes where livelihoods depend heavily on rainfall patterns, grazing cycles, and water access. Intensifying droughts, erratic rainfall, and resource scarcity have triggered forced migration, pushing families to relocate in search of pasture and water. These movements are not voluntary but survival-driven, often leading to conflict over shrinking resources and straining traditional coping mechanisms. Displacement also disrupts social cohesion, as communities are forced to negotiate new settlements, sometimes across ethnic boundaries.

The findings revealed that climate-driven migration burdens men and women differently. For instance, since men, traditionally responsible for herding, face personal insecurity risks and food insecurity risks as they travel longer distances with livestock often encountering insecurity and violence. Women on the other hand, are nowadays left at home to prevent disruption of children's education. This forces them to take up increased domestic responsibilities in securing their homes from invaders, providing food, providing water, education and caring for children and the elderly under precarious conditions. Migration of men in search of pasture further exposes women to vulnerabilities such as reduced access to health services, heightened risk of gender-based violence, and exclusion from decision-making forums. The study documents various decision-making forums on land adjudication and climate resilience that determine land management plans, migration routes for animals and climate resilience resource funds among other resources available at the county level where women are excluded or represented in a tokenism way.

Despite these challenges, women are exercising their agency beyond being victims of displacement. In both Kajiado South and Samburu North constituencies, women demonstrated agency through different climate adaptation strategies. Some of these documented include: diversifying livelihoods by combining livestock keeping with small scale farming, joining and organizing collective savings and loans groups popularly known as Chamas, creating



The researcher (left) with some of the research participants

collective kitchen gardens and initiating small-scale trading, seeking for employment as casual farm workers in Kajiado, harvesting of Aloe Vera plant for sale, while advocating for representation of women in important committees using the constitutional provisions that guarantee women's representation. Households with more resources were able to better rebuild and relocate during drought but female-headed households and widows faced more challenges due to their marginalized position in society.



Their adaptive strategies highlight the importance of integrating gender perspectives into climate resilience planning. This inequality underscores the need for inclusive policies that support vulnerable groups, especially women and youth, in accessing resources and participating in decision-making. Both regions are experimenting with water harvesting strategies, land adjudication and rotational grazing systems to mitigate the impacts of climate variability.

This can be done through the intersectionality theory and framework which considers how different groups are marginalized differently. Climate adaptation programmes should recognize how different groups in the community are affected differently by climate change and forced displacement. These groups include: women, children, the elderly, widows and single-headed households who should be central in designing the policies. Policy makers should ensure gender equity and community agency in order to transform displaced communities from a cycle of vulnerability due to climate change.

Politics workpackage

From Retributive to Restorative Justice: Indigenous conflict resolution mechanisms of a Maasai community, Simanjiro District

Issa Omary, University of Dar es Salaam

For pastoral or agropastoral communities of semi-arid regions of the northern highlands of Tanzania, climate-related conflicts have become an everyday reality due to mounting pressure on such scarce resources as arable land, grazing land, water, and pasture. These resources have for generations been the lifeline of these vulnerable communities. However, the ravages of climate change have been displacing communities in this part of the country, seasonally or permanently. Traditionally in these communities, key resources such as land are collectively owned by the whole community. For them land is not just merely soil for farming but it is integral to identity, culture, and the ancestors.

But given its socioeconomic and sociocultural significance, the land question (land ownership, land grabbing, and land dispossession) in the noted communities has played part in fuelling intercommunal conflicts. For this reasons, pastoral or agropastoral communities have traditionally developed indigenous conflict resolution mechanisms to resolve resource conflicts amicably. Such mechanisms put the community's elders at the heart of the dispute settlement process playing such roles as advisory panel of the wise, settlement facilitators, mediators, and even negotiators if they happen to be primary parties to the conflict.

In the above photo, I participated in conflict resolution process along with Laigwanaan (local chiefs) and Laiboni (spiritual leaders) as well as aggrieved parties to the outstanding conflict. In Manyara Region, the conflict relates to the encroachment of cultivated farmland owned by one of the Laigwanaan (an agro-pastoralist) in Kati sub-village, Losinyai Village in Oljoro No. 5 Ward in

Simanjiro District. The farmland was encroached by some herders resulting in substantial crop losses (maize, beans, ngwara, and millet). Settlement facilitation meeting was held in the Boma of the aggrieved party.

So, the guilty party (from a Laizer clan) brought two sacks of maize (200kg) to seek resolution of the conflict. But they did not come in person rather they sent along some Laigwanaan as settlement facilitators (shuttle diplomacy) to persuade the aggrieved party (an agro-pastoralist from a Mollel Clan) to accept reparation in form of compensation for the losses incurred resulting from encroachment of the farmland. Such kind of settlement facilitation arrangement was necessary to prevent the escalation of the conflict if at all the parties to the conflict were to meet physically in the first instance after the incident. The aim of the reparation was to promote restorative justice rather than retributive justice in order to restore broken relationships and support confidence-building among contending parties.

However, the conflict remained inconclusive at the time when I was there despite the aggrieved party hesitantly accepting the reparation as the compensation did not match damages caused in the farm. Consequently, the aggrieved party exited the meeting angrily and left for Arusha District to oversee his other ventures and fetch his herds. Of course, he did remember to greet his foes generously by buying us some soft drinks to quench our thirsty throats midst sunny and dusty afternoon in a Maasai Boma. So, I can conclude that the aggrieved party's conviction to ujamaa and ubuntu is unparalleled. It was at this moment that I further appreciated the role of African communitarian values and the continent's traditional ways of resolving disputes in transforming conflict relationships amicably. Both with regards to our approach to transitional justice and of course they way we treat and get along with our perceived or actual enemies.

Therefore, in this era of mounting geopolitical and geoeconomic uncertainties and multifaceted conflicts, communally- and climate-induced, it is very important that we embrace indigenous approaches to resolving outstanding conflicts and build inclusive resilient communities that can collectively undertake climate action to mitigate ravages of climate change for sustainability of our livelihoods. The African way in the twenty-first century is African solution for African problems!



Issa (red t-shirt) with Laigwanaan and Laiboni after a conflict resolution meeting

Refugees in Rural and Urban Uganda and Kenya

Child protection, education and durable solutions

Dominic Wani and Katerina Paul, Interns, EARCFD

In November 2025, we were involved as research assistants in fieldwork at Kakuma Refugee Camp. The research focused on issues relating to children - their protection and education - within the durable solutions framework. There were four focus group discussions (FGDs) that were conducted, targeting female parents, male parents, the youth and teachers. The participants hailed from South Sudan, Ethiopia, Burundi, Uganda, and Somalia. The research revealed contradictions on the (mis-)understanding between child protection actors and the community thinking. The discussion was so lively with almost all the respondents expressing concerns and interest on issues of child protection, durable solutions, and education.



Dominic and Katerina (standing) facilitating the discussions

Personal experience and reflections on the fieldwork

Salum Dominick, Intern, EARCFD

In the fieldwork at Kalobeyei Settlement, I worked in mobilizing men, women, youth and local leaders who had been displaced due to floods and forcibly moved out of Kakuma town to Kalobeyei. To achieve accuracy and integrity of data, I was an active co-facilitator of FGDs by asking, guiding, and probing questions, recording the sessions, translation, and transcribing discussions. This experience enhanced my awareness of the issue of displacement caused by climate and solidified the value of evidence generated by the community in making informed policy, leadership, and sustainable responses to forced displacement of fragile settings.



On-going session of focus group discussions

Paradox of Progress: Field study exposes deepening crisis for Refugees in Uganda

Robert Senath Esuruku and Joseph Mukasa, Makerere University

A comprehensive field study conducted between December 2025 and January 2026 has revealed a stark paradox of progress within Uganda's globally acclaimed refugee model. While the nation's 2006 Refugees Act remains a progressive beacon for the right to work and move freely, a deepening international funding crisis is systematically dismantling the survival nets of over 1.9 million displaced persons. Following a 54% funding gap triggered by the January 2025 U.S. funding freeze, the study documents a shift from socio-economic autonomy to extreme volatility. In urban centres like Katwe and Kisenyi, Category 3 dwellers have been entirely excluded from food and cash assistance, pushing 67% of the population into a cycle of debt and poverty. This financial throttling is compounded by chronic documentation backlogs at the Office of the Prime Minister, which effectively leaves thousands in a state of legal invisibility despite their statutory right to integration.

In the high-density Little Mogadishu of Kisenyi and the industrial clusters of Katwe, the demographic fabric is a complex mosaic of Congolese, South Sudanese, and Somali populations. These urban refugees have opted for the metropole over aid-dependent rural settlements, yet they face gruelling living conditions in *Muzigo* single-room rentals characterised by mud-and-wattle walls and rusted iron sheets. The study highlights a 34% rise in gender-based violence and a 37% surge in child protection cases, directly linked to reduced humanitarian staffing. Despite these hurdles, the resilience of Refugee-Led Organisations (RLOs) like YARID and Bondeko shines through, as they provide culturally nuanced mental health support and digital skills training where international agencies have retreated. However, without direct donor funding to the Kampala Capital City Authority (KCCA), these local first responders warn of imminent volunteer burnout amidst a national inflation spike.

The transition to the rural phase of the study in Adjumani District's Nyumanzi and Pagirinya settlements paints an equally grim picture of protracted displacement. Primarily hosting South Sudanese refugees, these settlements are reeling from a catastrophic drop in food aid, with monthly rations plummeting from US\$9 to as low as US\$2 per person. This has pushed acute malnutrition rates to 21.5%, a figure that far exceeds the World Health Organisation's emergency threshold of 15%. Families who once looked toward agricultural self-sufficiency now report that allocated land plots are insufficient for full subsistence, leading to a humanitarian-development gap that threatens to undo a decade of stability. The psychological toll is immense, with rising cases of *riak-nhom* (disturbed mind) reported as trauma from past conflicts is exacerbated by

the daily stress of near-starvation.

Public health and infrastructure in the Adjumani settlements are reaching a breaking point, with the clinical officer-to-population ratio stretching to a staggering 1:6,000. The 2025 funding cuts resulted in the layoff of hundreds of health workers and the closure of vital community outposts, leaving 21% of households in Pagirinya without functioning latrines. This lack of sanitation, paired with a reliance on unsafe water sources when motorised systems fail, has made the settlements perennial hotspots for cholera. Furthermore, the transition to secondary education has become a critical bottleneck; while primary enrolment is stable, only 1.5% to 9% of eligible youth are enrolled in secondary or vocational training. This lack of a professional path has led to desperate coping mechanisms, including removing children from schools for manual labour or entering them into early marriages to secure dowries.

Environmental degradation and social friction are also escalating as refugees travel deeper into host community lands for firewood, a necessity driven by the lack of alternative energy. In Adjumani, this search for fuel has led to massive deforestation and increased protection risks, particularly for women and girls who face Sexual and Gender-Based Violence (SGBV) while collecting wood. Competition for these dwindling natural resources remains the primary source of conflict between the refugees and the local Ma'di community, threatening the long-standing *Host-Guest* harmony. The study suggests that the open-door policy is being sustained more by the hospitality of local Ugandans than by the international financial commitments that once underpinned the model. Without a shift toward climate-resilient infrastructure and shared resource management, the ecological footprint of displacement may cause permanent damage to the region.

The location and focus on deep municipal integration. Recommendations include the decentralisation of registration services to prevent the legal invisibility found in Kampala and the implementation of fast-track professional accreditation for refugee doctors and engineers. By transitioning from a model of temporary assistance to one of permanent urban inclusion, Uganda could leverage the *Magezi ga Baganda* (wisdom of the people) and the diverse skill sets of its refugee population, from Congolese tailors to Somali micro-financiers. However, the study concludes that for this to succeed, the international community must honour its Global Compact responsibilities. If the 54% funding gap is not bridged, the Uganda Model risks becoming a hollow framework, leaving millions to navigate a landscape of high legal rights but zero practical resources.

Urban and Rural Refugees studies in Uganda's selected districts of Kampala and Adjumani, 2025-2026

Land-Scape and Housing Units in Kisenyi 3



Focus group discussion with Urban Refugees in Kisenyi 3 Parish Kampala Central Division Uganda



Focus group discussion with Refugees in Nyumanzi Refugee Settlement



4

SEMINARS

Two seminars were successfully conducted during the June–December period. The seminars drew the attendance of academics, researchers, practitioners, and early career scholars. The presented topics were:

UNIVERSITY OF DAR ES SALAAM
College of Social Sciences (CoSS)
Department of Geography
Research Chair on Forced Displacement

STRENGTHENING KNOWLEDGE, EVIDENCE USE AND LEADERSHIP IN THE GLOBAL SOUTH ON FORCED DISPLACEMENT: WITH A FOCUS ON EAST AFRICA

SEMINAR TOPIC

Trafficking in Human Beings and Smuggling of Migrants in East and Horn of Africa and Great Lakes Countries: Challenges and Ways Forward

GUEST SPEAKER
Dr. Gabriel Lubale, PhD, MIHRM, OGW
Coordinator,
Kenya Institute of Migration Studies (KIMS)

Date: Tuesday 7th October, 2025 | Time: 16:00-17:00 Hours (EAT)

Scan the QR code to join the meeting

Hekima ni Uhuru
www.udsm.ac.tz

Trafficking in Human Beings and Smuggling of Migrants in East and Horn of Africa and Great Lakes Countries - Gabriele Lubale (7 October, 2025).

Legal Frameworks and on-the-ground challenges of force displacement in Somalia -said Osma Bashir (2 December 2025).

UNIVERSITY OF DAR ES SALAAM
College of Social Sciences (CoSS)
Department of Geography
Research Chair on Forced Displacement

STRENGTHENING KNOWLEDGE, EVIDENCE USE AND LEADERSHIP IN THE GLOBAL SOUTH ON FORCED DISPLACEMENT: WITH A FOCUS ON EAST AFRICA

SEMINAR TOPIC

An Analysis of the Legal Frameworks and On-the-Ground Challenges of Forced Displacement in Somalia

PRESENTER
Said Osman Bashir (LLB, LL.M)
Senior Lecturer,
Faculty of Graduate Studies and Research,
Somali National University

Date: Tuesday 4th November, 2025 | Time: 16:00-17:00 Hours (EAT)

Scan the QR code to join the meeting

Hekima ni Uhuru
www.udsm.ac.tz

5

TRAINING AND CAPACITY BUILDING

Six interns for 2025 successfully completed their training and received the certificates.



Interns training sessions

6

RESEARCH SUPPORT

Reflections from a Research Supported Graduate

Naishiye Stanely
Masters on Heritage Management,
Tanzania



The support from the Research Chair on Forced Displacement at the University of Dar es Salaam has been instrumental throughout my Master's studies. The Chair's funding made it possible to carry out essential fieldwork, including interviews and participant

observation in Msomera. These activities provided the foundation for my dissertation on settlement planning for Maasai Traditional Male Circumcision practices after relocation. With access to local networks, planning documents, and mentorship, I was able to address both logistical and academic challenges, finalize my dissertation and successfully graduate on 1st December 2025.

The Chair's involvement went beyond financial support. It created meaningful opportunities for academic growth, such as presenting research at seminars and international webinars and engaging in critical feedback sessions with peers in writing workshops. These experiences strengthened my ability to communicate findings and connect research to real-world issues of displacement and heritage. Regular supervision and open discussion helped to refine my analysis and ensure the quality and relevance of my work. This supportive environment has encouraged me to keep pushing for practical implications and broader impact.

Another significant outcome has been the chance to lead a group fellowship funded by CODESRIA. Enabled by the Chair's network, I now coordinate a team of seven researchers focusing on documenting and impacting policy regimes on traditional medicine. This role has expanded my experience in group leadership, project planning and collaborative research. It has shown me the value of interdisciplinary approaches and sustained partnerships, both for advancing collective knowledge and producing actionable recommendations. Moving forward, these lessons will guide my efforts to publish and advocate for culturally sensitive planning in displacement contexts, while fostering academic collaboration at higher levels.

Leonidas Nshimyimana
Doctoral Research Fellow, Rwanda



A dedicated Rwandan Social Work Professional with Bachelor's Degree in Social Work, Master's Degree in Social Welfare Administration and an active PhD Student in Social Work with an extensive experience in humanitarian action; I bring a multidisciplinary

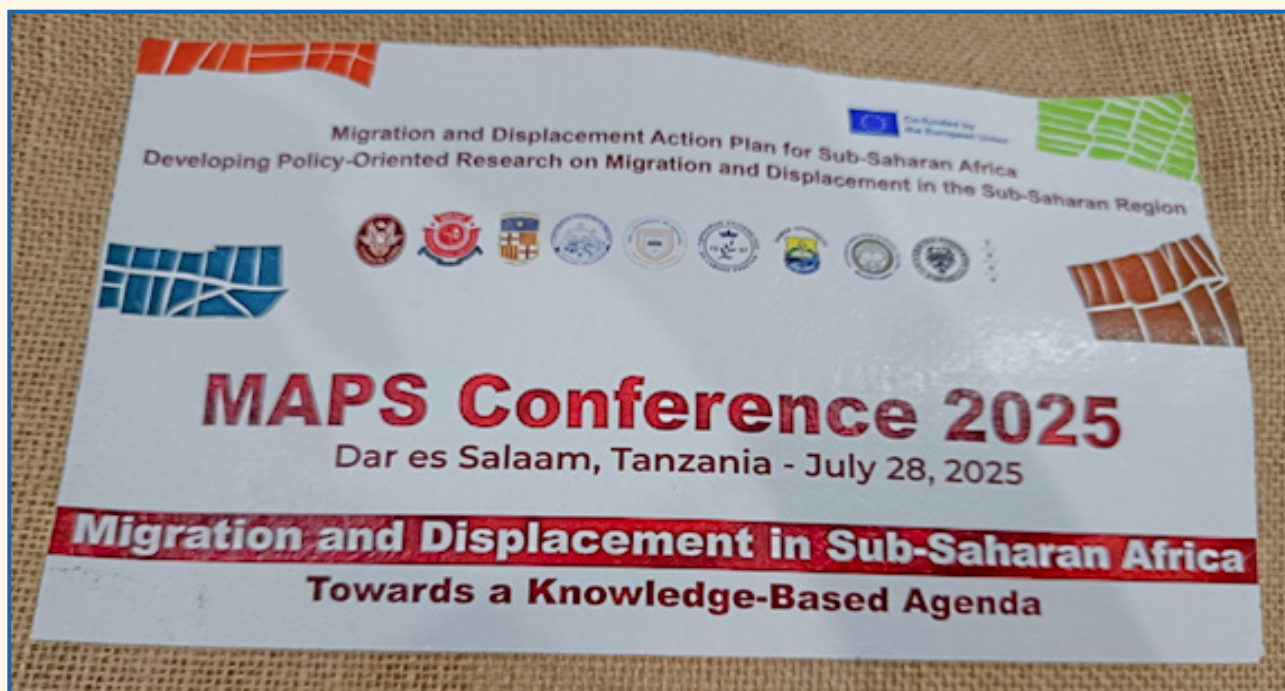
perspective that bridges frontline practice, organizational leadership, academic and research engagement. As a non-governmental organization's Executive Director, I provide leadership and strategic direction for the design of institutional strategic frameworks and plans, including the development of resource mobilization strategies to optimize the impact of large and complex programming interventions in line with organizational strategy priorities. I led the design and implementation of refugees' settlements and host community-centred programs, strengthened institutional governance, and mobilized partnerships to deliver sustainable social impact.

In my role as an Assistant Lecturer, my professional practice is grounded in evidence-based approaches to social development through the various research methodologies complemented by a strong academic focus on policy process, welfare administration and organizational management. Complementing these roles, I work as a freelance consultant in organizational management supporting NGOs, CBOs and FBOs in professional consultancy activities on legal compliance; strategic planning; grant proposal writings; partnership and donor mapping/localization; policies and regulations development with a strong commitment to ethical leadership, accountability and social justice. This multidisciplinary profile enables me to bridge practice, research, leadership, fostering sustainable, accountable, and impact-driven interventions across humanitarian and socio-economic development contexts.

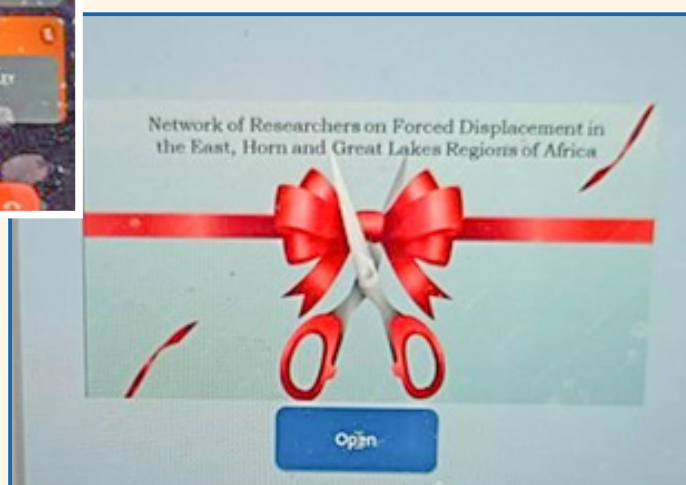
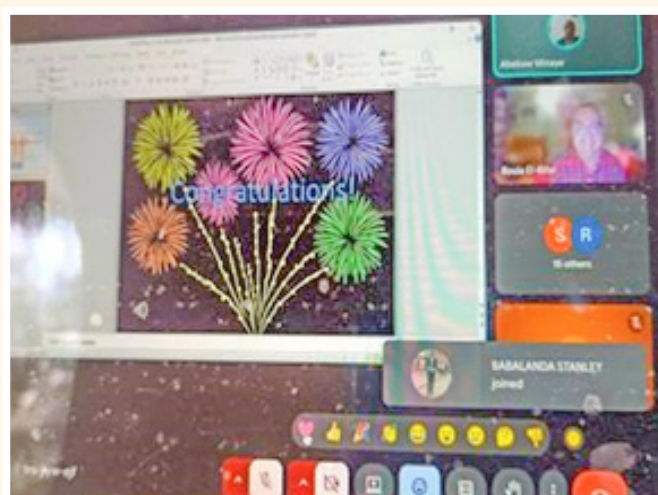
7

Network and Links

Our Chair was invited to give a keynote speech in Migration and Displacement Action for Sub-Saharan Africa (MAPS) project. The aim of the meeting was to bring scholars decision makers together to discuss innovative pathways to sustainable migration and displacement action.



The Chair is part of the EAST AND HORN OF AFRICA NETWORK OF RESEARCHERS



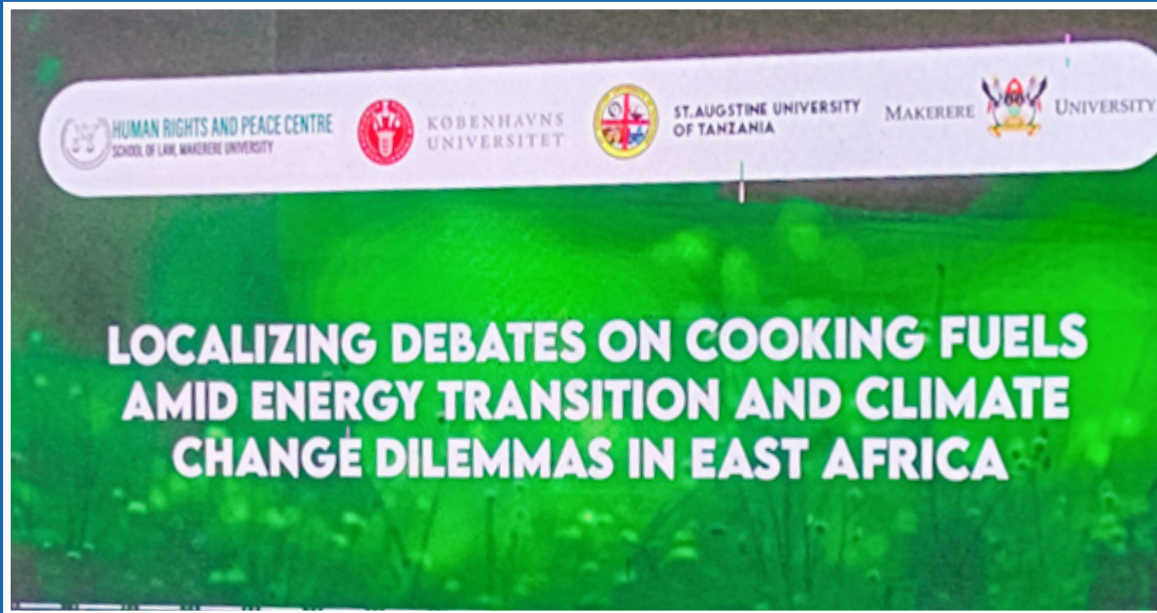
8 CONFERENCES

The Chair of Research Chair attended and presented on Protection of Climate Change-induced migrants engaged in involuntary labour migration.

International conference on the theme: *Migration and Development in the East and Horn of Africa* organized by ILO in collaboration with AAU at Dire Dawa and presented a paper on *Climate Change and Displacement data for planning*.



Attended a meeting in Uganda for the project titled: *Charcoal Conflict in Climate Change's Decarbonisation Dilemmas: Knots of Livelihood, Nutrition, Communities, Gender, Migration and Energy in East Africa* on 28-29 September, The Chair is serving on the advisory board in this meeting.



The Chair gave a key note speech in Five Universities conference 1-2nd October 2025

The Chair attended the Five Universities Conference in Morogoro on Beyond Survival: Building Inclusive and Climate resilient Societies on and delivered a key note titled:

GOVERNANCE, POLICIES AND INSTITUTIONS WITH A FOCUS ON THE ROLE OF POLICIES AND INSTITUTIONS IN DRIVING SUSTAINABLE DEVELOPMENT: STRIKING A BALANCE BETWEEN ENDOGENOUS AND AIS KNOWLEDGE





Deep Dive workshop for humanitarian, Development and Peace Actors organized by ReDSS in collaboration with other partners - November 11-12, 2025 on Advancing Social Inclusion in Kenya and Somalia





University of Dar es Salaam
College of Social Sciences
Department of Geography
Research Chair on Forced Displacement

Contact

Prof. Opportuna Kweka
Chair, Research Chair on Forced Displacement
Office Number 210
Geography Department, IRA Building
kweka@udsm.ac.tz
+255 763 677 254

Ms. Marium Msambya
Research and Administrative Assistant
Office Number 213
Geography Department, IRA Building
maryhmsambya09@gmail.com
+255 759 812 936



IDRC · CRDI